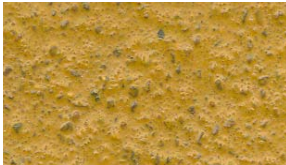


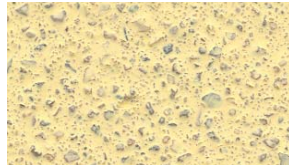
Flowcrete HF (6 - 9 mm)



Standard colour chart



Ochre



Cream



Mustard



Red



Dark Green



Mid Grey

The applied colours may differ slightly from the examples shown above.
Contact our customer services for a true colour sample or a special colour match.

Description

Flowcrete HF is a 6 - 9 mm heavy duty, chemical resistant polyurethane resin floor screed.

Uses

Ideal for wet processing zones such as chemical processing plants, secondary chemical containment zones, food manufacturing and food preparation areas.

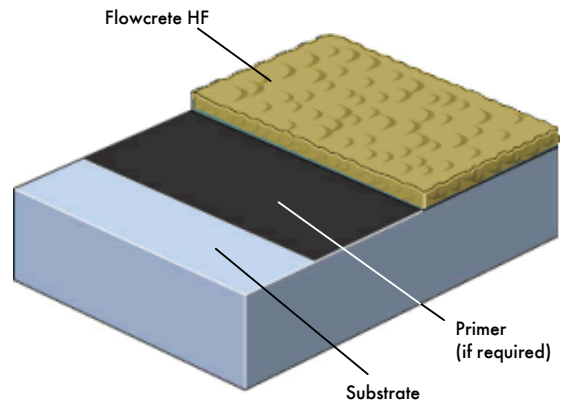
Benefits

- Very high chemical resistance
- Easy to clean and sterilise; minimal joints
- Heat resistant to 120°C at 9 mm
- Steam cleanable
- Non tainting, non dusting
- High abrasion resistance
- Withstands high mechanical stress
- Good alternative to expensive acid resistant tiles
- Low odour during application
- Positive slip resistance

Project References

SASOL acrylates plant, Gomba fish factory
Food:- Nestlé, McVities, Courage Brewery, Grants Whisky, also Meat, Fish and Drinks industry.
Pharmaceutical:- Astra Zeneca, Pfizer, Bayer, GlaxoSmithKline, Lever Brothers and many more.

System Design



Model Specification

Product: Flowcrete HF
Finish: Matt
Thickness: _____mm (6 - 9 mm)
Colour: _____

Preparatory work and application in accordance with manufacturer's instructions. Manufacturer: Flowcrete UK Ltd
Telephone: Customer Service - +44 (0) 1270 753000

Installation Service

The installation should be carried out by a Flowcrete approved contractor with a documented quality assurance scheme. Obtain details of our approved contractors by contacting our customer service team or enquiring via our web site www.flowcrete.com

Products Included in this System

Primer: Flowprime @ 0.25 kg/m²
OR, where a dpm is required,
Hydraseal DPM @ 0.5 kg/m²
OR, where high heat resistance is critical,
Ultrafresh Primer @ 0.25 kg/m²
Topping: For general chemical resistance
Flowcrete HF (density 2.1 kg/l) 12.6 kg/m² @ 6 mm
For best temperature resistance
Flowcrete HF (density 2.1 kg/l) 18.9 kg/m² @ 9 mm
Flowcrete HF is a self-sealing finish.
Detailed application instructions are available upon request.

Focus on the Floorzone

Flowcrete Group plc are world leaders in specialist industrial and commercial flooring. Systems available include: underfloor heating systems, floor screeds, surface damp proof membranes, decorative floor finishes, seamless terrazzo, car park deck waterproofing, tank lining systems... to name just a few. Our objective is to satisfy your Floorzone needs.

Flooring Design Service

Special corporate colours and designs can be produced to special order.

Substrate Requirements

Concrete or screed substrate should be a minimum of 25N/mm², free from laitance, dust and other contamination. The substrate should be dry to 75% RH as per BS 8204 and free from rising damp and ground water pressure. If no damp proof membrane is present, Hydraseal DPM can be incorporated directly beneath the Flowcrete HF system.

Environmental considerations

The finished system is assessed as non-hazardous to health and the environment. The long service life and seamless surface reduce the need for repairs, maintenance and cleaning. Environmental and health considerations are controlled during manufacture and application of the products by Flowcrete staff and fully trained and experienced contractors.

Important Note

Flowcrete's products are guaranteed against defective materials and manufacture and are sold subject to its standard Terms and Conditions of Sale, copies of which can be obtained on request.

System Performance Guide

Complies with BS 8204-6/FeRFA type 8.
The table below shows how well the system complies with different characteristics.
A scale of 1 - 5 where 5 is the best value.
5 Excellent, 4 Very Good, 3 Good (Pass), 2 Fair, 1 Poor

Fire Safety	4	Impermeability	5
Slip Resistance	4	Cleanability	4
Impact Resistance	5	Wear Resistance	5
Thermal Resistance	5	Chemical Resistance	5
Heavy Traffic	5	Scratch Resistance	5

Technical Information

The figures that follow are typical properties achieved in laboratory tests at 20 °C and at 50% Relative Humidity.

Fire Resistance	BS 476:Part 7
Slip Resistance	Surface Spread of Flame: Class 2 Method described in BS 7976-2 (typical values for 4-S rubber slider) Dry 100 Wet 40 minimum
Impact Resistance	BS 8204-1 Cat: A (< 0.5mm) ISO 6272 1 kg weight >1.8m 2 kg weight >1.5 m
Temperature Resistance	Tolerant up to 120 °C intermittent spillages or constant 105 °C dry heat at 9 mm thickness
Water Permeability	Nil - Karsten test (impermeable)
Vapour Permeability	ASTM E96:90 3g/m ² /24hrs (at 9 mm thick)
Chemical Resistance	Go to www.flowcrete.com Excellent resistance to sugars and most acids (organic and inorganic)
Abrasion Resistance	ASTM D4060 Taber Abrader: 25 mg loss per 1000 cycles (1 kg load using H22 wheels) BS 8204-2: Class AR2
Compressive Strength	> 50 N/mm ² (BS 6319)
Flexural Strength	20 N/mm ² (BS 6319)
Tensile Strength	10 N/mm ² (BS 6319)
Bond Strength	Greater than cohesive strength of 25 N/mm ² concrete. > 1.5 MPa.

Speed of Cure

	10 °C	20 °C	30 °C
Light traffic	36 hrs	24 hrs	12 hrs
Full traffic	72 hrs	48 hrs	24 hrs
Full chemical cure	10 days	7 days	5 days

Aftercare - Cleaning and Maintenance

Clean regularly using a single or double headed rotary scrubber drier in conjunction with a mildly alkaline detergent.

Life expectancy

7 - 10 years, dependant on thickness and subject to correct maintenance regime.

Environmental considerations

The finished system is assessed as non-hazardous to health and the environment. The long service life and seamless surface reduce the need for repairs, maintenance and cleaning. Environmental and health considerations are controlled during manufacture and application of the products by Flowcrete staff and fully trained and experienced contractors.

Further Information

To ensure you are specifying a fit for purpose flooring system for your project please consult our Technical Advisors on the number below or visit our website to register your interest in specifying one of the most durable floors on the market.

Flowcrete UK Ltd.
Booth Lane, Moston, Sandbach,
Cheshire, CW11 3QF. UK
Tel: +44 (0)1270 753000
Fax: +44 (0)1270 753333
Email: uk@flowcrete.com

Flowcrete Sweden AB
SE-284 80 Perstorp
Sweden
Tel: +46 435 386 30
Fax: +46 435 314 98
Email: sweden@flowcrete.com

Flowcrete International Ltd.
Lot 37631 & 37632, Jalan 6/37A,
Taman Bukit Maluri,
Industrial Area Kepong,
52100 Kuala Lumpur, Malaysia.
Tel: +60 3 6277 9575
Fax: +60 3 6277 4645
Email: malaysia@flowcrete.com

Flowcrete North America, Inc.
11133 I-45 South
Suite J, Conroe
Texas 77302
U.S.A.
Tel: +1 936 539 6700
Fax: +1 936 539 6701
Email: usa@flowcrete.com

Flowcrete
for the world at your feet