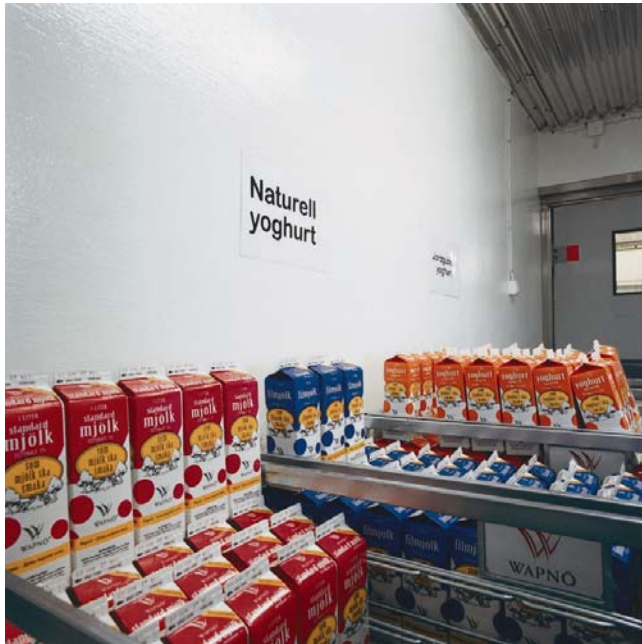


Peran WW



Description

Coloured gloss finish water based hygienic sealer for walls and ceilings.

Uses

Peran WW is suitable for use in food process areas, kitchens, light industrial areas, storerooms and garages.

Benefits

- Hygienic
- Vapour permeable
- Can be applied to damp substrates
- Cost effective
- Easy to apply
- Enhances appearance of working environment
- Solvent free
- Low odour.

Project References

GlaxoSmithKline, Gate Gourmet, ASDA, Convatec, Beaconsfield Footwear, Widnes Films.

Standard colour chart



Ice Blue 413



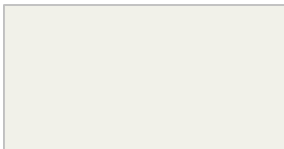
Polar Green 713



Vanilla Yellow 323



Magnolia 302



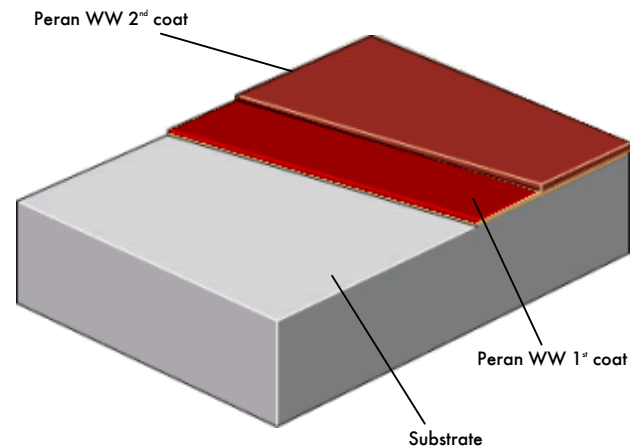
Silver Grey 204



White 050

The applied colours may differ slightly from the examples shown above. Contact our customer services for a true colour sample or a special colour match.

System Design



Model Specification

Product: Peran WW

Finish: Gloss

Thickness: 0.15 mm dry film thickness

Colour: _____

Preparatory work and application in accordance with suppliers instructions.

Supplier: Flowcrete UK Ltd

Telephone: Customer Service - +44 (0)1270 753000

Installation Service

The installation should be carried out by an approved contractor with a documented quality assurance scheme.

Obtain details of our approved contractors by contacting our customer service team or enquiring via our web site

www.flowcrete.com

Products Included in this System

Peran WW (density = 1.28 kg/l)

1st coat: Peran WW 0.25 kg/m² } Typical values

2nd coat: Peran WW 0.25 kg/m²

Application and coverage rates are assisted by the addition of water, up to 10% by volume.

Detailed application instructions are available upon request.

Focus on the Floorzone

Flowcrete Group plc are world leaders in specialist industrial and commercial flooring. Systems available include: underfloor heating systems, floor screeds, surface damp proof membranes, decorative floor finishes, seamless terrazzo, car park deck waterproofing, corrosion resistant systems... to name just a few. Our objective is to satisfy your Floorzone needs.

Design Service

Special corporate colours and designs can be produced to special order.

Substrate Requirements

Concrete or screed substrate should be a minimum of 25N/mm², free from laitance, dust and other contamination. The substrate should be surface dry to 95% RH as per BS8204 and free from rising damp and ground water pressure.

Environmental considerations

The finished system is assessed as non-hazardous to health and the environment. The long service life and seamless surface reduce the need for repairs, maintenance and cleaning. Environmental and health considerations are controlled during manufacture and application of the products by Flowcrete staff and fully trained and experienced contractors.

Important Note

Flowcrete's products are guaranteed against defective materials and manufacture and are sold subject to its standard Terms and Conditions of Sale, copies of which can be obtained on request.

System Performance Guide

Complies with BS 8204-6/FeRFA type 1.

The table below shows how well the system complies with different characteristics.

A scale of 1 - 5 where 5 is the best value.

5 Excellent, 4 Very Good, 3 Good (Pass), 2 Fair, 1 Poor

Fire Safety	5	Impermeability	3
Scratch Resistance	2	Cleanability	4
Impact Resistance	1	Wear Resistance	2
Thermal Resistance	2	Chemical Resistance	3

Technical Information

The figures that follow are typical properties achieved in laboratory tests at 20°C and at 50% Relative Humidity.

Fire Resistance	BS476:Part 7:1987 Class 1 Surface spread of flame.
Temperature Resistance	Tolerant up to 70°C
Vapour Permeability	ASTM:E96:90 - 20g / m ² / mm / 24 hr
Surface Hardness	182 secs. Koenig Hardness Test
Chemical Resistance	Good resistance to tea, coffee, cola, fruit juice, soaps and bleach
Abrasion Resistance	Taber Abrader: 15 mg loss per 1000 cycles (1kg load using CS17 wheels)
Bond Strength	BS8204:Part 2 Class AR3 Greater than cohesive strength of 25N/mm ² concrete. >1.5 MPa.

Speed of Cure

	10°C	20°C	30°C
Overcoating time	16 hrs	8 hrs	6 hrs
Full chemical cure	14 days	7 days	7 days

Life Expectancy

3 years, subject to correct maintenance regime.

Further Information

To ensure you are specifying a fit for purpose coating for your project please consult our Technical Advisors on the number below or visit our website to register your interest in specifying one of the most durable coatings on the market.

Flowcrete UK Ltd.
Booth Lane, Maston, Sandbach,
Cheshire, CW11 3QF. UK
Tel: +44 (0)1270 753000
Fax: +44 (0)1270 753333
Email: uk@flowcrete.com

Flowcrete Sweden AB
SE-284 80 Perstorp
Sweden
Tel: +46 435 386 30
Fax: +46 435 314 98
Email: sweden@flowcrete.com

Flowcrete International Ltd.
Lot 37631 & 37632, Jalan 6/37A,
Taman Bukit Maluri,
Industrial Area Kepong,
52100 Kuala Lumpur, Malaysia.
Tel: +60 3 6277 9575
Fax: +60 3 6277 4645
Email: malaysia@flowcrete.com

Flowcrete North America, Inc.
11133 I-45 South
Suite J, Conroe
Texas 77302
U.S.A.
Tel: +1 936 539 6700
Fax: +1 936 539 6701
Email: usa@flowcrete.com

Flowcrete
for the world at your feet