

## Ultrafresh MF (4 mm)



### Description

Ultrafresh MF is a 4 mm heavy duty, chemical resistant antimicrobial treated polyurethane resin floor finish. Attractive smooth matt coloured floor finish.

### Uses

Ideal for dry processing zones such as food packaging zones.

### Benefits

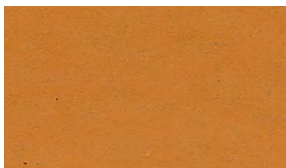
- Contains Ultra-Fresh<sup>®</sup> antimicrobial additive
- Very high chemical resistance
- Easy to clean and sterilise - minimal joints
- Non-tainting, non-dusting
- High abrasion resistance
- Low odour during application

### Project References

Food: Nestlé; Mars; McVities; Courage Brewery; Grants Whisky; also meat, fish and drinks industries.

Pharmaceutical: Astra Zeneca; Pfizer; Levers; GlaxoSmithKline; Bayer and many more.

### Standard colour chart



Ochre



Cream



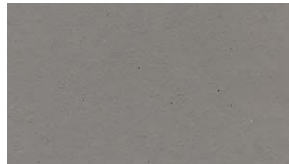
Mustard



Red



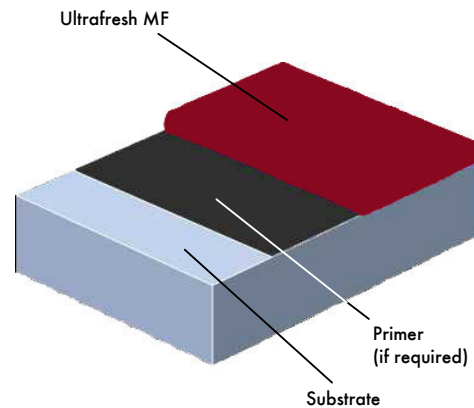
Dark Green



Mid Grey

The applied colours may differ slightly from the examples shown above. Contact our customer services for a true colour sample or a special colour match.

### System Design



## Model Specification

Product: Ultrafresh MF

Finish: Matt

Thickness: \_\_\_\_\_mm (4 mm)

Colour: \_\_\_\_\_

Preparatory work and application in accordance with suppliers instructions.

Supplier: Flowcrete UK Ltd

Telephone: Customer Service - +44 (0) 1270 753000

## Installation Service

The installation should be carried out by a Flowcrete approved contractor with a documented quality assurance scheme.

Obtain details of our approved contractors by contacting our customer service team or enquiring via our web site [www.flowcrete.com](http://www.flowcrete.com)

## Products Included in this System

**Primer:** Flowprime @ 0.25 kg/m<sup>2</sup>

**OR,** where a dpm is required,

Hydraseal DPM @ 0.5 kg/m<sup>2</sup>

**OR,** where high heat resistance is critical,

Ultrafresh Primer @ 0.25 kg/m<sup>2</sup>

Topping: Ultrafresh MF (density 1.9 kg/l) @ 7.6 kg/m<sup>2</sup>

Ultrafresh MF is a self-sealing finish.

Detailed application instructions are available upon request.

## Focus on the Floorzone

Flowcrete Group plc are world leaders in specialist industrial and commercial flooring. Systems available include: underfloor heating systems, floor screeds, surface damp proof membranes, decorative floor finishes, seamless terrazzo, car park deck waterproofing, corrosion protection systems... to name just a few.

Our objective is to satisfy your Floorzone needs.

## Flooring Design Service

Special corporate colours and designs can be produced to special order.

## Microbial / Fungal Resistance

The Ultra-Fresh<sup>®</sup> antimicrobial additive incorporated into Ultrafresh MF provides control of most bacteria and fungi which come into contact with the floor including those most threatening to human health: Staphylococcus Aureus, Escherichia Coli, Salmonella Choleraesuis, Listeria Welshimeri.



Ultra-Fresh<sup>®</sup> is the registered trademark of Thomson Research Associates.

## Substrate Requirements

Concrete or screed substrate should be a minimum of 25N/mm<sup>2</sup>, free from laitance, dust and other contamination. The substrate should be dry to 75% RH as per BS8204 and free from rising damp and ground water pressure. If no damp proof membrane is present Hydraseal DPM can be incorporated directly beneath the Ultrafresh MF system.

## Environmental considerations

The finished system is assessed as non-hazardous to health and the environment. The long service life and seamless surface reduce the need for repairs, maintenance and cleaning. Environmental and health considerations are controlled during manufacture and application of the products by Flowcrete staff and fully trained and experienced contractors.

## System Performance Guide

Complies with BS 8204-6/FeRFA type 7.

The table below shows how well the system complies with different characteristics.

A scale of 1 - 5 where 5 is the best value.

5 Excellent, 4 Very Good, 3 Good (Pass), 2 Fair, 1 Poor

Fire Safety	4	Impermeability	5
Slip Resistance	3	Cleanability	5
Impact Resistance	4	Wear Resistance	4
Thermal Resistance	4	Chemical Resistance	5
Heavy Traffic	4	Scratch Resistance	4

## Technical Information

The figures that follow are typical properties achieved in laboratory tests at 20 °C and at 50% Relative Humidity.

Fire Resistance	BS476 Part 7
Slip Resistance	Spread of Flame: Class 2 (indicative) Method described in BS 7976-2 (typical values for 4-S rubber slider) Dry 70 Wet 40
Impact Resistance	BS8204 Part1 Cat: A (<0.5mm) ISO6272 1 kg weight >1.8m 2 kg weight >1.5 m
Temperature Resistance	Tolerant up to 70 °C
Water Permeability	Nil - Karsten Test (impermeable)
Vapour Permeability	ASTM E96:90 5 g / m <sup>2</sup> / 24hrs (at 4 mm thick) Go to <a href="http://www.flowcrete.com">www.flowcrete.com</a>
Chemical Resistance	Excellent resistance to sugars and most acids (organic and inorganic)
Abrasion Resistance	ASTM D4060Taber Abrader: 30mg loss per 1000 cycles (1kg load using H22 wheels) BS8204-2: Class AR2
Compressive Strength	> 50 N/mm <sup>2</sup> (BS6319)
Flexural Strength	20 N/mm <sup>2</sup> (BS6319)
Tensile Strength	12 N/mm <sup>2</sup> (BS6319)
Bond Strength	Greater than cohesive strength of 25N/mm <sup>2</sup> concrete. > 1.5 MPa.

## Speed of Cure

	10 °C	20 °C	30 °C
Light traffic	36 hrs	24 hrs	12 hrs
Full traffic	72 hrs	48 hrs	24 hrs
Full chemical cure	10 days	7 days	5 days

## Aftercare - Cleaning and Maintenance

Clean regularly using a single or double headed rotary scrubber drier in conjunction with a mildly alkaline detergent.

## Life expectancy

7 - 10 years, dependant on thickness and subject to correct maintenance regime.

## Important Note

Flowcrete's products are guaranteed against defective materials and manufacture and are sold subject to its standard Terms and Conditions of Sale, copies of which can be obtained on request.

## Further Information

To ensure you are specifying a fit for purpose flooring system for your project please consult our Technical Advisors on the number below or visit our website to register your interest in specifying one of the most durable floors on the market.

**Flowcrete UK Ltd.**  
Booth Lane, Moston, Sandbach,  
Cheshire, CW11 3QF. UK  
Tel: +44 (0)1270 753000  
Fax: +44 (0)1270 753333  
Email: [uk@flowcrete.com](mailto:uk@flowcrete.com)

**Flowcrete Sweden AB**  
SE-284 80 Perstorp  
Sweden  
Tel: +46 435 386 30  
Fax: +46 435 314 98  
Email: [sweden@flowcrete.com](mailto:sweden@flowcrete.com)

**Flowcrete International Ltd.**  
Lot 37631 & 37632, Jalan 6/37A,  
Taman Bukit Maluri,  
Industrial Area Kepong,  
52100 Kuala Lumpur, Malaysia.  
Tel: +60 3 6277 9575  
Fax: +60 3 6277 4645  
Email: [malaysia@flowcrete.com](mailto:malaysia@flowcrete.com)

**Flowcrete North America, Inc.**  
11133 I-45 South  
Suite J, Conroe  
Texas 77302  
U.S.A.  
Tel: +1 936 539 6700  
Fax: +1 936 539 6701  
Email: [usa@flowcrete.com](mailto:usa@flowcrete.com)

**Flowcrete**  
for the world at your feet